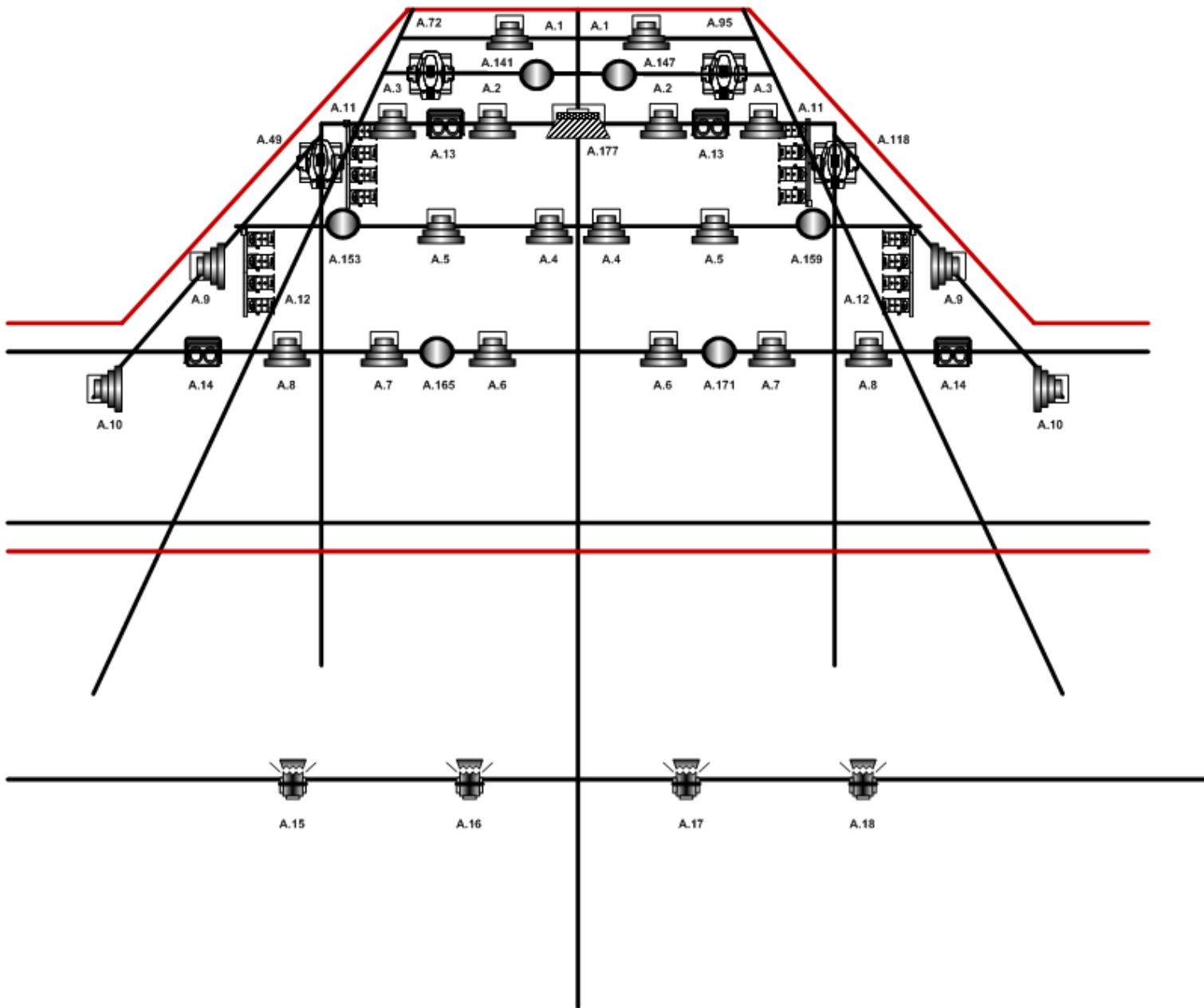







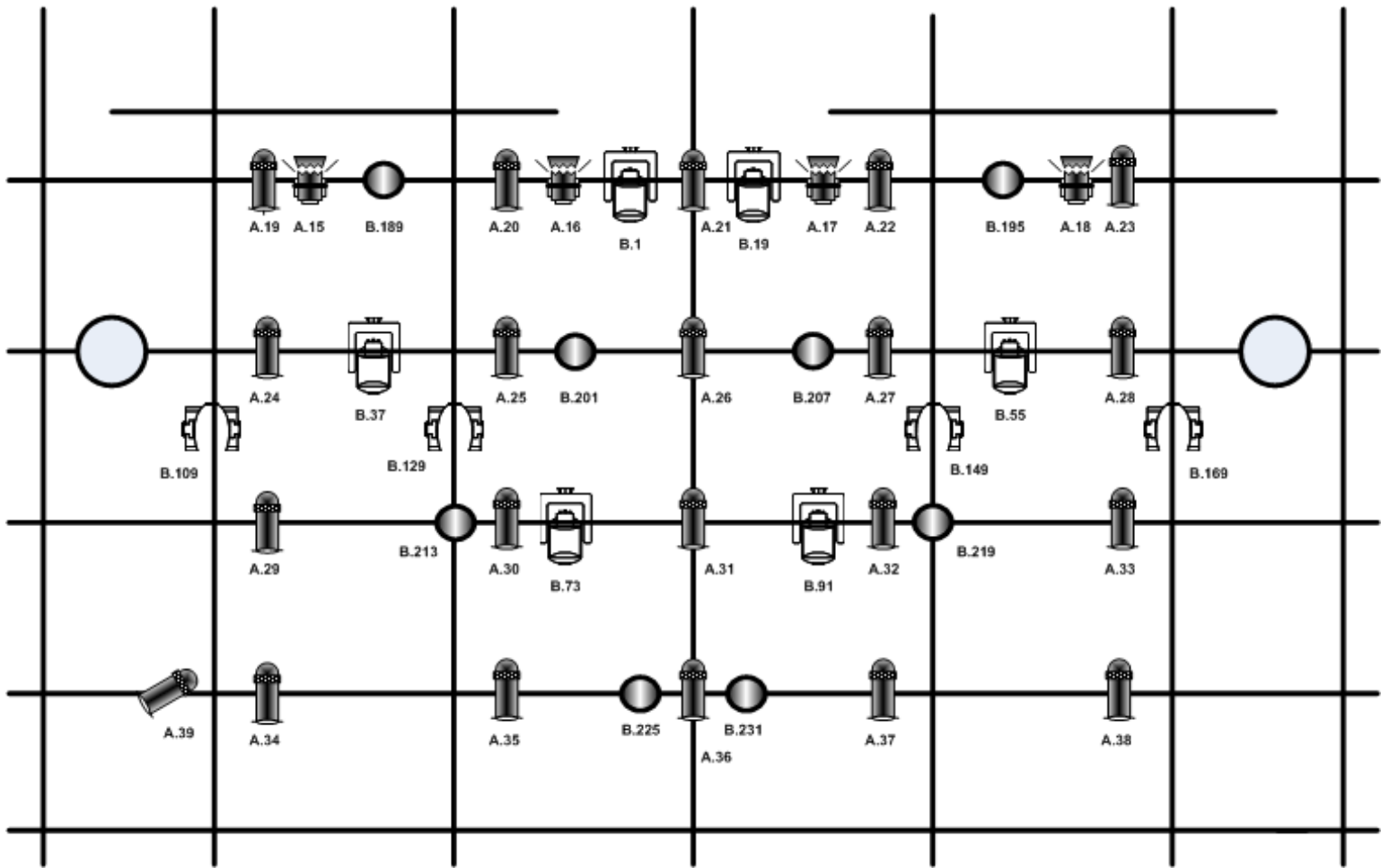








Lightplot Ekko 2019 Stage



| | |
|---|--------------------------|
|  | Pinpoint bar |
|  | ETC S4 par 575W |
|  | Showtec Cate-eye blinder |
|  | CLS Colourpar 12 |
|  | Clay paky axcor spot 300 |
|  | Martin Atomic 3000 |
|  | Fresnel 500W |

Lightplot Ekko 2019 Hall



| | |
|--|-----------------------------|
|  | PAR 64 500W |
|  | Robe Colorspot 250 AT |
|  | CLS Colorpar 12 |
|  | Fresnel 500W |
|  | Discobol |
|  | Clay Paky alpha beam 300 |

Ekko – Specs

Desk:

Pearl expert pro V 11.1 + Touch Wing

2 x DMX 5-pin from F.O.H

Dimmers:

48 x LSC Redback 2.3 Kw

Conventional:

20 x ETC S4 par 575W

20 x PAR64 500W

2 x Pinspot ACL set

4 x Cat-eye blinder

4 x Fresnel 500W

Intelligent:

4 x Clay Paky Axcor spot 300

4 x Robe Colorspot 250 AT

6 x Clay Paky Alpha beam 300

14 x CLS Colourpar 12

Floor package:

4 x ETC S4 par 575W

4 x CLF Tricolor mini par

Smoke:

1 x JEM compact hazer PRO

On-stage power:

1 x 32A Stage left

Softpatch Ekko 2019

| | Fixture | Brand | Mode | DMX adress | Multi nr. |
|-----------------------------------|-------------------|--------|------|------------|-----------|
| Universe 1 Dimmers + Stage | | | | | |
| 1 | S4 Par | Dimmer | | A.1 | |
| 2 | S4 Par | Dimmer | | A.2 | |
| 3 | S4 Par | Dimmer | | A.3 | |
| 4 | S4 Par | Dimmer | | A.4 | |
| 5 | S4 Par | Dimmer | | A.5 | |
| 6 | S4 Par | Dimmer | | A.6 | |
| 7 | S4 Par | Dimmer | | A.7 | |
| 8 | S4 Par | Dimmer | | A.8 | |
| 9 | S4 Par | Dimmer | | A.9 | |
| 10 | S4 Par | Dimmer | | A.10 | |
| 11 | Pinspot ACL set | Dimmer | | A.11 | |
| 12 | Pinspot ACL set | Dimmer | | A.12 | |
| 13 | Cat-eye blinder | Dimmer | | A.13 | |
| 14 | Cat-eye blinder | Dimmer | | A.14 | |
| 15 | Fresnel | Dimmer | | A.15 | |
| 16 | Fresnel | Dimmer | | A.16 | |
| 17 | Fresnel | Dimmer | | A.17 | |
| 18 | Fresnel | Dimmer | | A.18 | |
| 19 | Par 64 | Dimmer | | A.19 | |
| 20 | Par 64 | Dimmer | | A.20 | |
| 21 | Par 64 | Dimmer | | A.21 | |
| 22 | Par 64 | Dimmer | | A.22 | |
| 23 | Par 64 | Dimmer | | A.23 | |
| 24 | Par 64 | Dimmer | | A.24 | |
| 25 | Par 64 | Dimmer | | A.25 | |
| 26 | Par 64 | Dimmer | | A.26 | |
| 27 | Par 64 | Dimmer | | A.27 | |
| 28 | Par 64 | Dimmer | | A.28 | |
| 29 | Par 64 | Dimmer | | A.29 | |
| 30 | Par 64 | Dimmer | | A.30 | |
| 31 | Par 64 | Dimmer | | A.31 | |
| 32 | Par 64 | Dimmer | | A.32 | |
| 33 | Par 64 | Dimmer | | A.33 | |
| 34 | Par 64 | Dimmer | | A.34 | |
| 35 | Par 64 | Dimmer | | A.35 | |
| 36 | Par 64 | Dimmer | | A.36 | |
| 37 | Par 64 | Dimmer | | A.37 | |
| 38 | Par 64 | Dimmer | | A.38 | |
| 39 | Par 64 (DJ front) | Dimmer | | A.39 | |
| 40 | Floor dim | Dimmer | | A.40 | |
| 41 | Floor dim | Dimmer | | A.41 | |
| 42 | Floor dim | Dimmer | | A.42 | |
| 43 | Floor dim | Dimmer | | A.43 | |
| 44 | SPARE | Dimmer | | A.44 | |
| 45 | SPARE | Dimmer | | A.45 | |
| 46 | SPARE | Dimmer | | A.46 | |
| 47 | SPARE | Dimmer | | A.47 | |
| 48 | SPARE | Dimmer | | A.48 | |

| | Fixture | Brand | Mode | DMX adress | Multi nr. |
|------------------------|------------------|--------------|---------------|-------------------|------------------|
| 49 | Axcor 300 spot | Clay Paky | 23 ch mode | A.49 | |
| 50 | Axcor 300 spot | Clay Paky | 23 ch mode | A.72 | |
| 51 | Axcor 300 spot | Clay Paky | 23 ch mode | A.95 | |
| 52 | Axcor 300 spot | Clay Paky | 23 ch mode | A.118 | |
| 53 | Colourpar 12 | CLS | 6 ch mode | A.141 | |
| 54 | Colourpar 12 | CLS | 6 ch mode | A.147 | |
| 55 | Colourpar 12 | CLS | 6 ch mode | A.153 | |
| 56 | Colourpar 12 | CLS | 6 ch mode | A.159 | |
| 57 | Colourpar 12 | CLS | 6 ch mode | A.165 | |
| 58 | Colourpar 12 | CLS | 6 ch mode | A.171 | |
| 59 | Atomic 3000 | Martin | 4 ch mode | A.177 | |
| Universe 2 Hall | | | | | |
| 60 | Alpha beam 300 | Clay Paky | Vector RainON | B.1 | |
| 61 | Alpha beam 300 | Clay Paky | Vector RainON | B.19 | |
| 62 | Alpha beam 300 | Clay Paky | Vector RainON | B.37 | |
| 63 | Alpha beam 300 | Clay Paky | Vector RainON | B.55 | |
| 64 | Alpha beam 300 | Clay Paky | Vector RainON | B.73 | |
| 65 | Alpha beam 300 | Clay Paky | Vector RainON | B.91 | |
| 66 | Colorspot 250 AT | Robe | Mode 3 | B.109 | |
| 67 | Colorspot 250 AT | Robe | Mode 3 | B.129 | |
| 68 | Colorspot 250 AT | Robe | Mode 3 | B.149 | |
| 62 | Colorspot 250 AT | Robe | Mode 3 | B.169 | |
| 63 | Colourpar 12 | CLS | 6 ch mode | B.189 | |
| 64 | Colourpar 12 | CLS | 6 ch mode | B.195 | |
| 65 | Colourpar 12 | CLS | 6 ch mode | B.201 | |
| 66 | Colourpar 12 | CLS | 6 ch mode | B.207 | |
| 67 | Colourpar 12 | CLS | 6 ch mode | B.213 | |
| 68 | Colourpar 12 | CLS | 6 ch mode | B.219 | |
| 69 | Colourpar 12 | CLS | 6 ch mode | B.225 | |
| 70 | Colourpar 12 | CLS | 6 ch mode | B.231 | |

| | | | | | |
|----|-------------------|-----|-------|--|--|
| 71 | Compact hazer PRO | JEM | 2 ch. | | |
|----|-------------------|-----|-------|--|--|